

2020 ANNUAL REPORT



■ Annual Reporting Requirements

The Council on Education for Public Health (CEPH) is a private non-profit corporation established in 1974 by the American Public Health Association (APHA) and the Association of Schools of Public Health, now known as the Association of Schools and Programs of Public Health (ASPPH). The articles of incorporation were adopted by the two associations, which became the original corporate members of the new organization. The articles specified CEPH's purposes as follows:

- (a) Improving the quality of education in public health schools, institutions, and programs through accreditation, certification, approval, and related activities which publicly attest compliance with defined standards; including particularly the accreditation of graduate schools of public health.
- (b) Otherwise encouraging improvement in the quality of education in public health through conduct of research, provision of consultation, distribution of publications, support of demonstrations, definition of standards, development of sanctions, sponsoring of examinations, and other appropriate means related to accreditation, certification, and approval activities.
- (c) Assuring an independent mechanism for the conduct of these accreditation and related activities under joint sponsorship of professional and educational organizations comprising the corporation membership.

The articles of incorporation ascribed broad powers and responsibilities to the governing body of the newly established organization. One of the obligations specified in the charter was a requirement that CEPH annually call a meeting of the corporation membership at which duly designated representatives of those organizations would meet with the Council to receive its annual report. This report, which reviews the activities of calendar year 2020, is submitted in response to that requirement.

■ About CEPH

The Council on Education for Public Health is a private, non-profit corporation chartered under provisions of the District of Columbia Non-Profit Corporations Act. It is recognized by the Internal Revenue Service as a 501(c)(3) organization and by the State of Maryland as an organization exempt from local income and sales taxes. No organizational or structural changes took place during 2020 that would affect this status.

Council on Education for Public Health
1010 Wayne Avenue, Suite 220
Silver Spring, MD 20910
(202) 789-1050
www.ceph.org

Copyright © 2021 Council on Education for Public Health

Many of the images used in this annual report were submitted by accredited schools and programs of public health. CEPH is grateful for the use of these photographs in this publication and on its website.

Table of Contents

Letter from the President	ii
Board of Councilors	1
Committees & Council Meetings.....	2
Volunteers.....	3
Management & Administration	7
Staff	
Sources of Financial Support	
Budgeting and Financial Planning	
Audit of CEPH Accounts	
Training & Technical Assistance	9
Webinars & Workshops	
Trends 2020	
Site Visitor Training	
Site Visits	12
Accreditation Decisions	14
CEPH Trademark	15
Applications	16
Accreditation Matters.....	17
Looking Ahead to 2021	18

Letter from the President

Dear Friends and Colleagues,



The Council on Education for Public Health is pleased to share its 2020 annual report, which shows continued demand for quality education in public health. Throughout the past year, the public health community was faced with combatting the COVID-19 pandemic. While this global crisis has changed the way in which CEPH staff and volunteers are able to interact with the schools and programs we serve, it has not changed our mission or resolve. Now more than ever, quality education for future public health practitioners and researchers is critical. The Council was continuously impressed by the work undertaken by public health faculty, researchers, and students in response to the pandemic throughout 2020.

This was a busy and eventful year for CEPH! The Council continued to make accreditation decisions by pivoting to virtual site visits in June 2020 and released *Trends 2020: The Landscape of Public Health Education*, a report highlighting the effects and trends of the implementation of the 2016 criteria on public health schools and programs, in the fall.

CEPH has continued to focus on providing technical assistance to schools and programs. Priority activities included multiple offerings of the Accreditation Orientation Workshop, regular technical assistance webinars, and presentations at the meetings of our partner organizations.

During 2020, CEPH also redesigned its site visitor training. The training moved to a fully online delivery format to provide a more in-depth training to a growing cadre of site visitors.

We sincerely appreciate the engagement of the academic and practice community alike in these efforts. Achieving our mission of assuring quality education in public health is only possible with the support of our many partners. The Council would also like to thank its dedicated volunteers who contribute countless hours to the accreditation process. This has been a challenging year, but we could not be more proud of or grateful for the work of our public health colleagues. The future of public health is brighter for these efforts.

We hope you find this report informative and comprehensive. Questions and comments are always welcome.

A handwritten signature in black ink that reads "Joyce R. Gaufin". The signature is written in a cursive, flowing style.

Joyce R. Gaufin
President

Board of Councilors

The articles of incorporation establish a 10-member Board of Councilors as the governing body of CEPH. Members of the governing body are appointed either singly or jointly by the two corporate members.

APHA appoints three members to the Council, and those representatives are expected during their tenure as councilors to be "primarily involved in the practice of public health or in the conduct of related health services."

ASPPH appoints three members, and its delegates are to be "drawn from the faculty, administration or student body of schools of public health."

The remaining four councilors are jointly appointed by the corporate members on the recommendation of the CEPH governing body.

Two of these positions represent the interests and concerns of the general public; public members may not be employed by an academic institution that has a school or program of public health. The remaining two positions represent the programs accredited by CEPH. These candidates are nominated after broad solicitation of relevant organizations. During 2020, the Council was composed of the following individuals:

Representing Public Health Practice Term Ending

Joyce R. Gaufin 2021
Executive Director (Ret.)
Great Basin Public Health Leadership Institute
Dammeron Valley, UT

Harry Kwon, PhD, MPH, MCHES 2022
Director, Division of Research Education
Office of Extramural Research, Education,
and Priority Populations Agency for
Healthcare Research and Quality
*Serving in a personal capacity
Dernwood, MD

Rose Marie Martinez, ScD 2020
Director, Board on Population Health
& Public Health Practice
Health and Medicine Division
The National Academies of Sciences,
Engineering, and Medicine
Washington, DC

Representing Schools of Public Health Term Ending

Iman Hakim, MD, PhD, MPH 2020
Dean, Mel and Enid Zuckerman College
of Public Health
University of Arizona
Tucson, AZ

Tricia Penniecook, MD, MPH 2021
Vice Dean for Education & Faculty Affairs
University of South Florida
Tampa, FL

Phillip Williams, PhD, CIH 2020
Dean Emeritus, College of Public Health
University of Georgia
Athens, GA

Representing Programs Term Ending

Ruth Gaare Bernheim, JD, MPH 2020
MPH Program Director
University of Virginia
Charlottesville, VA

Stephanie Miles-Richardson, DVM, PhD 2021
MPH Program Director
Morehouse School of Medicine
Atlanta, GA

Representing the Public Term Ending

Elizabeth Altmaier, PhD 2021
Professor Emeritus
University of Iowa
Iowa City, IA

Tiffany Hill, JD 2020
TH Legal Consulting, JD
Edmond, OK



Committees & Council Meetings

2020 Council Meetings

Regular business meetings engage the councilors in accreditation-related actions—accreditation reviews, interim reports, substantive change notices—and policy-related matters such as the adoption of criteria, policies, procedures, and internal practices. The Council also provides financial oversight for the agency. The Council conducted four business meetings in 2020 via Zoom.

- March 13
- June 4-5
- September 3
- November 19-20

In 2020, the major work of the Council focused on the continued implementation of its 2019-2024 strategic plan, adopting revised Accreditation Procedures, and developing plans for the 2021 revision of the 2016 Accreditation Criteria for Schools and Programs.

Executive Committee

During 2020, the following councilors served as officers of the corporation and as members of the Executive Committee:

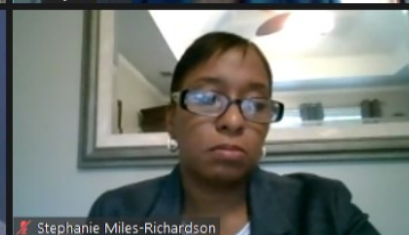
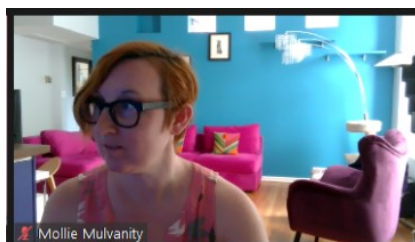
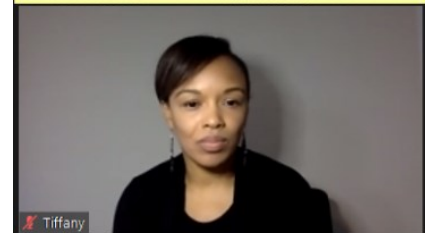
President: Phillip Williams, PhD, CIH

President-elect: Joyce Gaufin

Treasurer: Elizabeth Altmaier, PhD

Councilor-at-Large: Stephanie Miles-Richardson, DVM, PhD

The Executive Committee met six times in 2020 via conference call. The committee functions as a finance committee; it performs regular monitoring of CEPH financial matters, adopts annual fee schedules, and initially reviews and assists with budget development. The Executive Committee is empowered to act for the Council between regular CEPH meetings; it considers substantive change notices and other routine accreditation-related business, freeing the Council meetings for discussion of substantive matters. At its November 2020 meeting, the full Council elected, by secret ballot, the officers who will serve on the Executive Committee in 2021.



Volunteers

CEPH's most valuable asset is the cadre of dedicated individuals who contribute their time, effort, and expertise to serve as Council members and site visitors. Including time devoted to the CEPH Council and related meetings, site visits, and site visitor training, the total estimated value of

contributions of volunteers during 2020 was \$524,000. This is the amount CEPH would have had to pay professionals to carry out similar functions at modest rates of pay. The following individuals served as site visit evaluators during 2020:

PRACTITIONERS	
<p>Nina L. Alesci, PhD, MPH <i>Analyst</i> Blue Cross of Minnesota Medicare STARS Program</p>	<p>Sharon Cameron, MPA <i>Director, Health & Human Services</i> Peabody Health Department</p>
<p>Amanda J. Cash, DrPH, MPH <i>Senior Advisor</i> US Department of Health and Human Services</p>	<p>Ralph L. Clegg, EHS, MPA <i>Executive Director / Local Health Officer (Ret)</i> Utah County Health Department</p>
<p>David T. Dyjack, DrPH, CIH <i>Executive Director & CEO</i> National Environmental Health Association</p>	<p>Mighty Fine, MPH, CHES <i>Acting Director, Center for Professional Development & Partnerships</i> American Public Health Association</p>
<p>Justin Frederick, MPH, CPH <i>Supervisor, Communicable Disease Epidemiology</i> Douglas County Health Department</p>	<p>Kristin H. Hill, MSHSA, RN <i>Evaluation Consultant</i> Phelps, WI</p>
<p>Dalana Johnson, MPH <i>Senior Public Health Analyst</i> Health Resources and Services Administration</p>	<p>Cynthia Kenyon, MPH <i>Epidemiologist Supervisor</i> Minnesota Department of Health</p>
<p>Brian Lee, MPH <i>Chief Public Health Informatics Officer</i> Centers for Disease Control and Prevention</p>	<p>Patrick Maloney, MPAH, CHO, RS <i>Former Assistant Director & Chief of Environmental Health</i> Brookline Board of Health</p>
<p>Jennifer McKeever, MPH, MSW <i>Public Health Consultant</i> Washington, DC</p>	<p>Shannon Middleton, MPH <i>Public Health Advisor</i> Centers for Disease Control and Prevention</p>
<p>William F. Pilkington, DPA, MPA, MA <i>CEO & Public Health Officer</i> Cabarrus Health Alliance</p>	<p>Matt Richardson, DrPH, MPH <i>Director of Public Health</i> Denton County Health Department</p>
<p>Mary Helen Smith, MPH, CPH, RS, REHS <i>Director of Environmental Health</i> Portage County Combined General Health District</p>	<p>Matthew Stefanak, MPH <i>Former Health Commissioner</i> Mahoning County Health District</p>

Volunteers (cont.)

PRACTITIONERS (cont.)

Alison R. Sullivan, MPH
Senior Consultant
Deloitte Consulting LLP

Kim Marie Thorburn, MD, MPH
Former Director
Spokane Regional Health District

David H. Trump, MD, MPH, MPA, FACPM
Chief Deputy Commissioner for Public Health (Ret)
Virginia Department of Health

Pamela R. Walker, MPA, CPHA
Management Consultant
Walker Planning and Management

Felicia M. Warren, MPH, CHES
Public Health Advisor
Centers for Disease Control and Prevention

ACADEMICS

Stephen C. Alder, PhD
TSH Morton Endowed Professor
Public Health Program
University of Utah

Betsy Aumiller, DEd
Associate Director
Public Health Program
Pennsylvania State University

Craig H. Blakely, PhD, MPH
Dean
School of Public Health and Information Sciences
University of Louisville

Cyril Blavo, DO, MS, MPH&TM, FACOP
Chair, Department of Public Health
Public Health Program
Nova Southeastern University

Wendy E. Braund, MD, MPH, MEd, FACPM
Associate Dean for Public Health Practice
Graduate School of Public Health
University of Pittsburgh

Rick A. Danko, DrPH
Director, Curriculum Development
School of Public Health
Texas A&M Health Science Center

Eleanor Feingold, PhD
Senior Associate Dean
Graduate School of Public Health
University of Pittsburgh

Melinda Forthofer, PhD
Former Chair, Department of Public Health Sciences
Public Health Programs
University of North Carolina, Charlotte

Amanda L. Golbeck, MA, PhD
Associate Dean for Academic Affairs
Fay W. Boozman College of Public Health
University of Arkansas for Medical Sciences

David I. Gregorio, PhD, MS
Director
Graduate Program in Public Health
University of Connecticut

Jennifer M. Griffith, DrPH, MPH
Associate Dean for Public Health Practice
School of Public Health
Texas A&M Health Science Center

Carl Hanson, PhD, MS, MCHES
Chair, Department of Health Sciences
Public Health Program
Brigham Young University

Volunteers (cont.)

ACADEMICS (cont.)

Bonni C. Hodges, PhD
Chair, Health Department
Community Health Program
SUNY - Cortland

Jennifer K. Ibrahim, PhD, MPH, MA
Associate Dean for Academic Affairs
College of Public Health
Temple University

Susan Klitzman, DrPH, MPH
Senior Associate Dean for Administration
CUNY School of Public Health

Richard S. Kurz, PhD
Dean Emeritus
School of Public Health
University of North Texas Health Science Center

Grace Lartey, PhD
Program Director
Public Health Programs
Western Kentucky University

Amy F. Lee, MD, MPH, MBA, CPH
Director
Master of Public Health Program
Consortium of Eastern Ohio

Marian C. Levy, DrPH, RD
Associate Dean
School of Public Health
University of Memphis

Shan Mohammed, MD, MPH, FAAFP
Chair, Department of Health Sciences
Public Health Program
Northeastern University

Leah C. Neubauer, EdD, MA
Director of Accreditation & Assessment
Public Health Program
Northwestern University

Robert P. Pack, PhD, MPH
Associate Dean for Academic Affairs
College of Public Health
East Tennessee State University

Tricia Penniecook, MD, MPH
Vice Dean for Education
College of Public Health
University of South Florida

Sara S. Plaspoli, DrPH, CHES
Associate Dean
Jiann-Ping Hsu College of Public Health
Georgia Southern University

Darcell Scharff, PhD
Associate Professor
College for Public Health and Social Justice
Saint Louis University

Anthony L. Schlaff, MD, MPH
Director, Public Health & Professional Degree Programs
Public Health Program
Tufts University

David A. Shoham, PhD, MSPH
Director
Public Health Program
Loyola University Chicago

Diane Marie M. St. George, PhD
Director
MPH Program
University of Maryland, Baltimore

Lisa Sullivan, PhD
Associate Dean for Education
School of Public Health
Boston University

Kristine Tollestrup, PhD, MPH
Director, Graduate Education Programs
Master of Public Health Program
University of New Mexico

Volunteers (cont.)

ACADEMICS (cont.)

Susan Tortolero Emery, PhD
Senior Associate Dean
School of Public Health
University of Texas Health Science Center at Houston

Nannette C. Turner, PhD, MPH
Chair, Department of Public Health
Public Health Program
Mercer University

Patrick M. Vivier, MD, PhD
*Director, Interdisciplinary Education Programs &
Director, MPH Program*
School of Public Health
Brown University

Susan M. Wozenski, MPH, JD
Vice Chair, Department of Family & Community Health
MPH Program
University of Maryland, Baltimore

James D. Yager, PhD
Edyth H. Schoenrich Professor Emeritus
Bloomberg School of Public Health
Johns Hopkins University



Virtual site visit with the University of Memphis School of Public Health

Management & Administration

Staff

Laura Rasar King, EdD, MPH, MCHES serves as the Executive Director of CEPH. Dr. King is a frequent speaker on higher education, accreditation, academic public health, and public health workforce issues. She represents CEPH at national and international public health and accreditation meetings.

Mollie Mulvanity, MPH, CAE, serves as the Deputy Director of CEPH. During her years at CEPH, she has visited more than 100 public health schools and programs while providing consultation or staffing accreditation reviews. Ms. Mulvanity serves on the board of the Association of Specialized & Professional Accreditors. She is also a frequent presenter at professional meetings on the evolution of quality assurance in public health higher education, particularly in relation to MPH curricula.

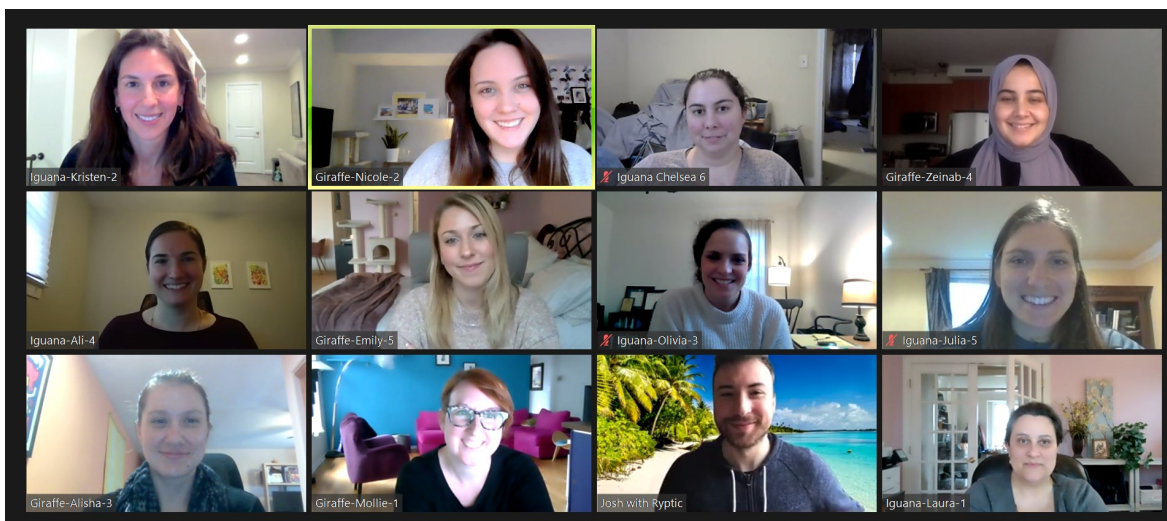
Kristen Varol, MPH, PMP, CHES, serves as the Director, Accreditation Services. Ms. Varol has provided consultation to and staffed accreditation reviews for schools and programs across the US and internationally. She is a member of ASPPH's Data Committee and supports efforts to streamline data collection and sharing between the two organizations.

Nicole Williams, MPH, PMP, serves as the Director, Special Projects. During her years at CEPH, Ms. Williams has assisted in the development and implementation of standalone baccalaureate program accreditation. In 2019, she managed the development and implementation of the Accreditation & Education Forum.

Alisha O'Connell, MPH, serves as the Associate Director, Monitoring & Evaluation. Her duties include monitoring data and operations to identify opportunities for growth or improvement and solutions to issues that arise. She also conducts consultation visits with schools and programs in addition to managing the accreditation review process and serving as the coordinator for accreditation visits.

Alexandra DiOrio, MPH, CHES and Olivia Luzzi, MPH, CPH, serve as Senior Accreditation Specialists. Their duties include leading CEPH initiatives in addition to managing the accreditation review process and serving as the coordinator for accreditation visits.

Accreditation Specialists Zeinab Bazzi, MPH, Emily Albers, MPH and Julia Konner, MPH, CHES, carry out tasks to ensure that the accreditation review process for schools and programs proceeds smoothly. Their duties include managing the accreditation review process, serving as coordinators for accreditation site visits, editing and preparing sections of site visit team reports, developing training materials, conducting training sessions, and responding to stakeholder inquiries.



Management & Administration (cont.)

Sources of Financial Support

The Council's income derives from a combination of contributions and fees. During FY 2020 (July 1–Jun 30), APHA contributed \$104,167 in unrestricted funds to CEPH. Accredited schools of public health, public health programs, and standalone baccalaureate programs paid approximately \$1,319,201 in annual fees. Additional fees are charged when a school or program undergoes its periodic reevaluation, begins the applicant process, or seeks consultation. Total revenues during 2020 from contributions, fees for specific services, interest, and miscellaneous sources amounted to \$1,739,170 (including reimbursement for travel expenses of site visitors and consultants).

Budgeting and Financial Planning

The Council adopted a budget for calendar year 2020 in the amount of \$1,752,670. Budget planning takes into account anticipated review workloads and expected inflation, as well as the organization's policy about maintaining reserves. Actual income for the year was slightly lower than projected at \$1,739,170. Actual expenditures for the year were significantly lower than budgeted,

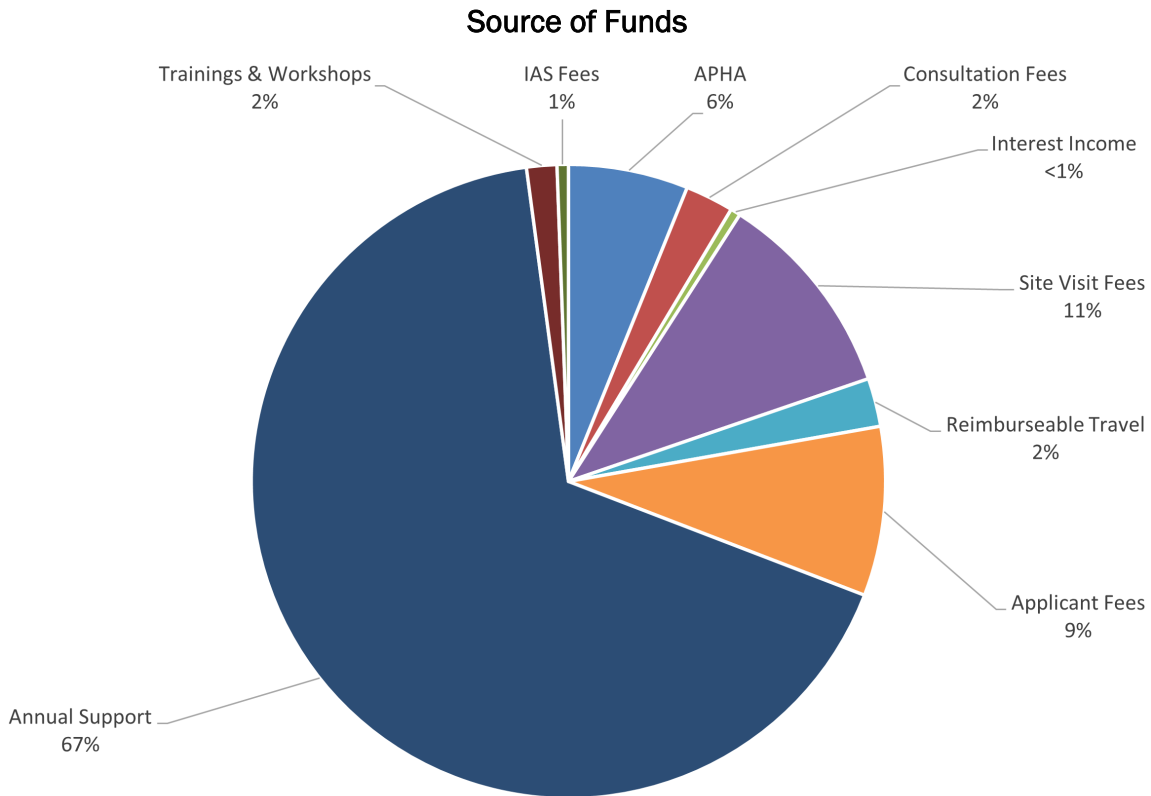
approximately \$1,466,030 due to the pause on travel necessitated by the pandemic. CEPH ended the year with approximately \$1,300,000 in cash reserves amounting to approximately 88% of the operating expenses for the year. The Council follows a policy of maintaining reserves equal to at least six months of operating expenses.

The APHA Executive Board approved a new funding agreement for July 1, 2020 to June 30, 2021 of \$107,291.

Each summer, the CEPH Executive Committee establishes a fee schedule that will be applicable for the following year. The annual support fees for accredited schools and programs increased slightly for 2021. Applicant, accreditation, and consultation fees remained the same as the previous year.

Audit of CEPH Accounts

The accounting firm of Neuman, Pollack and Associates, P.A. was retained to conduct an independent audit of CEPH's financial records for 2020. A copy of the audited financial statement is a part of this annual report to the corporate members.



Training and Technical Assistance

In 2020, CEPH offered a range of live, synchronous training and technical assistance events available in online formats.

Total attendees:
>1,100

Distinct attendees:
789

As of December 31, 2020, CEPH accredited a total of 218 units: 67 schools of public health, 132 public health programs, and 19 standalone baccalaureate programs. CEPH's 2020 training and technical assistance events reached

97% of accredited schools

86% of accredited programs

53% of accredited standalone baccalaureate programs

Technical Assistance (TA)

TA webinars are an important tool for educating schools and programs about the accreditation criteria.

All TA webinars are free, recorded, and made available on the CEPH website.

Technical Assistance (TA)

MPH-DrPH Curriculum
April 2020

Diversity
July 2020

Annual Reporting
October 2020

Pre-Application Orientation Webinar (P-AOW)

The P-AOW is compulsory for units prior to sending an Initial Application Submission (IAS) to begin the accreditation process. CEPH offers two versions (one for SBP and one for PHP units) given that the application requirements differ. Units pursuing accreditation in the SPH category work one-on-one with CEPH staff given their individualized needs.

The P-AOW includes three parts:

1. Pre-recorded CEPH introduction (the same for all units)
2. Pre-recorded walk through of the IAS (SBP and PHP versions)
3. Live session with Q&A opportunity (SBP and PHP versions) offered quarterly

Accreditation Orientation Workshops (AOW)

In 2020, CEPH hosted three AOWs on March 16-17, July 30-31, and August 3-4. These events were comprehensive sessions on the accreditation criteria and featured sessions for representatives of accredited units and units pursuing initial accreditation.



36 Graduate Programs

11 Standalone Baccalaureate Programs

All three sessions were offered virtually in response to the COVID-19 pandemic. Sessions covered CEPH procedures, focusing on the procedures most relevant to each group of stakeholders, but devoted a majority of the two-day agenda to a detailed examination of the expectations associated with each of the accreditation standards. The workshop also included breakout sessions to review samples from each participant and opportunities for participants to share challenges and insights with one another.

Site visitor refresher webinars

The site visitor refresher is a one-hour webinar that provides an update on site visit processes and protocols. In 2020, the webinar also discussed virtual site visits in response to the COVID-19 pandemic and provided tips for producing a high-quality team report. The webinar is held twice a year, at the beginning of each site visit season. Site visitors scheduled for the upcoming season are required to attend, either by participating in the live webinar or by listening to the recording on their own.

Site visitors reached:
51

The landscape of public health education



In 2020, CEPH undertook a first-of-its-kind look at the landscape of public health education. Almost a year in the making, *Trends 2020: The landscape of public health education*, is a collection of 16 standalone documents that highlights facts and observations in the first three years after implementation of the 2016 Accreditation Criteria for Schools and Programs.

Staff sifted through hundreds of documents, reports, and websites to collect, record, clean, and analyze data from January 2016 to December 2019. The resulting documents present information on MPH and DrPH curricular design, impact of the criteria on key topic areas, range and type of degrees offered in accredited units, and vignettes and case-studies on approaches to addressing selected curricular requirements.

Numerous interesting curricular trends were identified through our analysis. One revealed the top concentrations by degree type. The top three concentrations offered in the MPH degree are social and behavioral sciences, epidemiology, and health services administration. At the bachelor's level, the second most offered degree in accredited units, the top three concentrations are general public health, social and behavioral sciences, and environmental health sciences.

Another key takeaway is the curricular approach to the MPH degree. At the time of the analysis, 194 units offered an accredited MPH degree with 46% of programs offering a single concentration. MPH curricular designs were divided into three

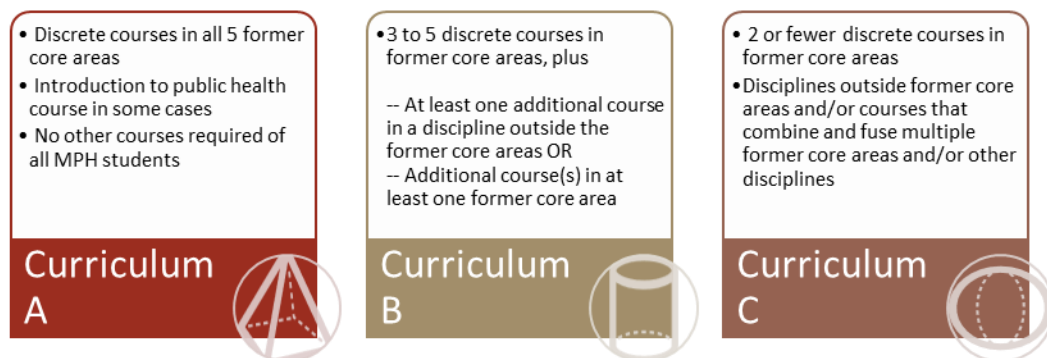
categories: A, B, and C (see figure for definitions). Staff found that 79% of the accredited units offer an MPH degree that is categorized as Curriculum B.

The median number of required courses for an MPH degree is eight courses. Programs that offer a single MPH concentration generally have more required courses than programs (and all schools) that offer multiple MPH concentrations. Our analysis also found that 51% of MPH curricula added a program planning, implementation, and/or evaluation course as part of the required curriculum, and 50% percent added a research methods course.

Trends 2020 identified that between 2017 and 2020, there was a net gain of environmental health programs of study. Forty-two EHS degrees were added, nine as part of an initial accreditation and 33 in already accredited units; 94% of schools of public health still offer at least one EHS degree, and 84% of MPH curricula still require a discernable EHS course.

CEPH unveiled its findings in its November 2020 webinar; a record 252 attendees listened to the 80-minute presentation. Additionally, ASPPH promoted Trends 2020 through its Friday Letter as well as through several of its online communities. Trends 2020 was also featured in APHA's *The Nation's Health* newsletter in the February 2021 issue. Staff also presented findings from Trends 2020 at APTR and wrote an article for AAPHP. CEPH plans to submit specific pieces of Trends 2020, along with updated data, as opinions in select journals.

Staff continue to track and analyze information and present snippets once a month through Data Corner, part of the weekly CEPH Happenings email. While there are no immediate plans for another trends report, Trends 2020 provides a baseline for any future analyses.



Training and Technical Assistance

The past year presented challenges for providing place-based training for new and returning site visitors, but with travel on hold, CEPH staff used this time to develop a fully online, in-depth training for a new cohort of site visitors.

CEPH staff initially invited approximately 90 academic and practitioner peer reviewers to join in this first round of training. Approximately 45 responded as being interested, and 33 completed the training in its entirety and are now part of our strong cadre of peer reviewers.

The training consists of 34 online, self-paced modules that total approximately six hours of training. Each module covers one or more of the CEPH accreditation criteria and includes a narrated PowerPoint detailing elements of each criterion, how to assess the criterion, and what the final team report section will look like. Some modules also contain a learning assessment and handouts with additional information.

Training modules site visitors spent the most time reviewing



Trainees were given four months to complete the self-paced modules. At the end of this period, CEPH staff hosted a two-hour, live, web-based capstone training focused on application of skills and knowledge of the criteria. CEPH staff provided trainees an exercise workbook and provided time during the training to work through the examples and provide additional context.

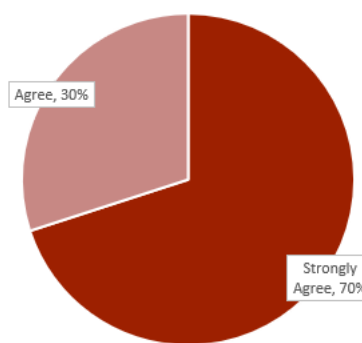
At the end of the training, CEPH conducted an evaluation of the overall training experience. When asked to rank confidence in understanding of accreditation processes, 44% (n=12) reported strongly agreeing and 56% (n=15) reported agreeing. When asked to rank confidence in

understanding of the CEPH accreditation criteria, 33% (n=9) reported strongly agreeing, 63% (n=17) reported agreeing, and 4% (n=1) were neutral.



When asked to rank whether the live training was a helpful capstone to the self-paced materials, 70% (n=19) reported strongly agreeing and 30% (n=8) reported agreeing. Additionally, trainees said the following about the training: “Both components [of the training] were equally useful. A nice combination of didactic preparation and application,” and “I thought the whole training experience was very well designed. The self-paced training and the live combination was thorough, easy to follow, and helped solidify learning.”

The live session was a helpful capstone to the training



Based on the success of this new training delivery format, CEPH looks forward to using this method for training future cycles of new site visitors and as refreshers for returning site visitors. We plan to continue to refine these trainings to make them as useful as possible to all of our constituents.

2020 Site Visits

Evaluation visits by teams of qualified reviewers are the primary basis by which the CEPH governing body is informed about the schools and programs it accredits. Typically, teams arrive on site the evening before the visit and spend two or three days interviewing university officials, administrators, school and program faculty, students, alumni, and community partners. Teams also review documents and view facilities and resources. The last component of the visit is an exit briefing.

On March 13, 2020, CEPH began a period of social distancing and compliance with stay-at-home orders at the local, state, and federal levels due to the COVID-19 pandemic. CEPH adopted a Virtual Site Visit Policy and Disclosure Statement on April 23, 2020. Beginning in June 2020, all site visits took place virtually via Zoom. During 2020, CEPH conducted visits with the following 32 schools and programs:

Date	Institution	Unit*	Chair
Jan 22-24	Indiana University - Purdue University Indianapolis	SPH	James D. Yager, PhD
Feb 10-11	University of North Carolina, Greensboro	PHP	Stephen C. Alder, PhD
Feb 20-21	East Carolina University	SBP	Justin Frederick, MPH, CPH
Feb 26-28	University of Arizona	SPH	Wendy E. Braund, MD, MPH, MEd, FACPM
Mar 2-3	Eastern Virginia Medical School	PHP	Susan M. Wozenski, MPH, JD
June 1-2	Old Dominion University	PHP	Matthew Stefanak, MPH
June 8-9	Montclair State University	PHP	Cynthia Kenyon, MPH
June 11-12	Western Washington University	SBP	Carl Hanson, PhD, MS, MCHES
June 15-16	Simmons University	PHP	Leah C. Neubauer, EdD, MA
July 27-29	West Virginia University	SPH	Richard S. Kurz, PhD
Aug 10-12	Indiana University at Bloomington	SPH	Kristin H. Hill, MSHSA, RN
Sept 14-15	Louisiana State University-Shreveport/ Louisiana State University HSC-Shreveport	PHP	Nannette C. Turner, PhD, MPH
Sept 16-18	University of Louisville	SPH	Darcell Scharff, PhD
Sept 21-22	Florida A&M University	PHP	Shan Mohammed, MD, MPH, FAAFP

2019 Site Visits (cont.)

Date	Institution	Unit*	Chair
Sept 24-25	California State University, San Marcos	SPH	Kim Marie Thorburn, MD, MPH
Sept 28-29	East Stroudsburg University	PHP	Sara S. Plaspohl, DrPH, CHES
Oct 1-2	Tennessee State University	PHP	Nina L. Alesci, PhD, MPH
Oct 1-2	University of South Dakota/ South Dakota State University	PHP	Kristine Tollestrup, PhD, MPH
Oct 5-6	California State University, Fresno	PHP	Stephen C. Alder, PhD
Oct 7-9	University of Memphis	SPH	Tricia Penniecook, MD, MPH
Oct 8-9	University of Vermont	PHP	Diane Marie M. St. George, PhD
Oct 15-16	Loyola University Chicago	PHP	Matthew Stefanak, MPH
Oct 19-20	A.T. Still University	PHP	David I. Gregorio, PhD, MS
Oct 19-20	University of Toledo	PHP	Sara S. Plaspohl, DrPH, CHES
Oct 28-30	University of Washington	SPH	James D. Yager, PhD
Nov 12-13	California State University, Fullerton	PHP	David Trump, MD, MPH, MPA, FACPM
Nov 16-17	Eastern Kentucky University	PHP	Susan M. Wozenski, MPH, JD
Nov 16-17	University of Michigan, Flint	PHP	Amy Lee, MD, MPH, MBA, CPH
Dec 2-4	Kent State University	SPH	Richard S. Kurz, PhD
Dec 7-9	University of Nevada, Reno	SPH	Craig Blakely, PhD, MPH
Dec 10-11	National University	PHP	Kim Marie Thorburn, MD, MPH
Dec 10-11	Uniformed Services University of the Health Sciences	PHP	David Dyjack, DrPH, CIH
*The unit refers to the unit of accreditation:		<ul style="list-style-type: none"> • PHP: Public Health Program • SBP: Standalone Baccalaureate Program • SPH: School of Public Health 	

Accreditation Decisions

During 2020, the Council took final actions on the following 25 accreditation reviews, of which 10 were new applicants and two transitioned from a collaborative PHP to a standalone PHP. Each review followed an evaluation site visit and the preparation of a written report.

Initial Accreditation

Cornell University

MPH Program

Initial accreditation to July 1, 2025

Eastern Virginia Medical School

MPH Program

Initial accreditation to December 31, 2025

Transition from multi-partner PHP to single institution

Eastern Washington University

MPH Program

Initial accreditation to July 1, 2025

Illinois State University

Bachelor of Science in Health Promotion and Education

Initial accreditation to July 1, 2025

Marshall University

Graduate Program in Public Health

Initial accreditation to July 1, 2025

Old Dominion University

MPH Program

Initial accreditation to December 31, 2025

Transition from multi-partner PHP to single institution

St. Catherine University

Public Health Program

Initial accreditation to July 1, 2025

Salisbury University

Bachelor of Science in Community Health Program

Initial accreditation to July 1, 2025

Simmons University

Public Health Program

Initial accreditation to December 31, 2025

Western Washington University

Community Health Program

Initial accreditation to December 31, 2025

Continued Accreditation

East Carolina University

BS in Public Health Studies Program

Continued accreditation to December 31, 2027

East Carolina University

Public Health Program

Continued accreditation to July 1, 2027

Emory University

Rollins School of Public Health

Continued accreditation to July 1, 2027

Florida International University

Robert Stempel College of Public Health & Social Work

Continued accreditation to July 1, 2027

Indiana University - Purdue University Indianapolis

Richard M. Fairbanks School of Public Health

Continued accreditation to July 1, 2027

Indiana University at Bloomington

School of Public Health

Continued accreditation to December 31, 2027

Instituto Nacional de Salud Publica

Escuela de Salud Publica de Mexico

Continued accreditation to July 1, 2027

Montclair State University

Public Health Program

Continued accreditation to December 31, 2027

University of Arizona

Mel and Enid Zuckerman College of Public Health

Continued accreditation to December 31, 2027

University of Michigan

School of Public Health

Continued accreditation to July 1, 2027

University of New Hampshire

MPH Program

Continued accreditation to July 1, 2027

University of North Carolina, Greensboro

MPH Program in Community Health Education

Continued accreditation to December 31, 2027

Accreditation Decisions (cont.)

University of Texas Health Sciences Center in Houston
School of Public Health
Continued accreditation to July 1, 2027

Wright State University
MPH Program
Continued accreditation to July 1, 2027

West Virginia University
School of Public Health
Continued accreditation to December 31, 2027

CEPH Trademark

The Council on Education for Public Health (CEPH) has registered its name and acronym with the United States Patent and Trademark Office.

The federal registration symbol (®) or the phrase “Registered in U.S. Patent and Trademark Office” will now appear at least once on 1) all advertising and printed materials bearing the CEPH name; 2) in packaging in which any goods are sold or shipped; 3) any tags or labels applied or affixed to the goods upon which the mark is used; and 4) all website pages featuring the mark. Failure to use any of these notices may preclude a monetary recovery in an infringement suit. The registration is valid until September 24, 2029.



Applications

The Council reviewed 11 requests from educational institutions desiring to begin the accreditation evaluation process in 2020.

These schools and programs do not appear on the published CEPH list until after a site visit and a favorable decision is made about accreditation. Applicants have up to two years to undertake a self-

study process and submit the document; the site visit is conducted about five months later. However, applicants may be ready to proceed more quickly and may negotiate earlier site visit dates.

Newly approved applicants include the following units:

Binghamton University – SUNY (PHP) MPH Program Self-study due by July 6, 2022	California State University, Los Angeles (PHP) Master of Public Health Program Self-study due by March 13, 2022
Indiana Wesleyan University (PHP) Graduate Program in Public Health Self-study due by March 13, 2022	Ithaca College (SBP) BS in Public and Community Health Self-study due by December 15, 2022
Middle Tennessee State University (PHP) MS in Health and Human Performance Self-study due by October 19, 2022	St. John Fisher College (PHP) MPH Program Self-study due by October 19, 2022
SUNY – College at Brockport (PHP) Public Health Program Self-study due by June 5, 2022	Teikyo University (PHP) Public Health Program Self-study due by June 5, 2022
The College of New Jersey (PHP) Public Health Program Self-study due by March 13, 2022	University of New Haven (PHP) MPH Program Self-study due by June 5, 2022
University of Wisconsin, La Crosse (SBP) BS in Public Health and Community Health Education Self-study due by April 13, 2021	

The status of applicants, including the due date of the preliminary self study, the scheduled site visit dates, and the anticipated decision date, is continuously updated on the CEPH website.



Virtual site visit with Florida A&M University public health program

Accreditation Matters

US Department of Education Recognition

CEPH is recognized by the United States Department of Education (USDE). Recognition by USDE is essential to establishing eligibility of accredited schools and programs for certain federal funds. Recognition requires that an accrediting agency meet specific criteria and guidelines and that there be a periodic review and recertification of the qualifications of an accrediting body.

Recognition is conferred for periods up to five years. CEPH was reviewed in July 2019 and, following this review, the Secretary of Education notified CEPH that its recognition had been extended for a five-year period with no required interim reporting.



Participation in ASPA

CEPH was a founding member and continues as an active participant in the Association of Specialized and Professional Accreditors (ASPA), a national organization of approximately 60 specialized accrediting agencies that provides membership services, including professional development for staff, and advocates on behalf of the specialized accrediting community.

CEPH's executive director participates actively in ASPA and has served on several committees and task forces in past years. She served as chair of ASPA's Board of Directors from May 2014 through May 2017. She served as ASPA's treasurer in 2017-2019. In 2018, she became the chair of the Education Policy Committee, which closely monitors policy developments related to the US Department of Education as well as the Council on Higher Education Accreditation.

As chair of the Education Policy Committee, Dr. King serves as a liaison for programmatic accreditation

with the US Department of Education and congressional staff to ensure that the perspectives of specialized and professional accreditors are considered in national policy discussions.



CEPH's deputy director currently serves on the ASPA board. Additionally, Ms. Mulvanity has served as chair of the ASPA Professional Development Committee. In this role, she planned and led educational programming for ASPA members at their bi-annual meetings. ASPA is the primary source for professional development among the staff of programmatic accreditors, and CEPH encourages participation in these educational opportunities for all staff.

CEPH is proud to be a national leader in specialized and professional accreditation.

Collaboration with partner organizations

CEPH staff regularly collaborate with partner organizations to advance the field of public health education.

CEPH's executive director serves on a number of committees and task forces, including as chair of the Governance 2.0 Task Force for the Society of Public Health Education, as the primary CEPH representative on the Council on Linkages Between Academia and Public Health Practice, and as a representative of specialized accreditation on the Student's Right To Know Task Force for the Higher Learning Commission.

CEPH staff also presented at national and international meetings on accreditation-related topics and matters. In 2020, CEPH staff presented at the ASPA fall conference, the ASPPH Annual Meeting and Undergraduate Summit, and at the 16th World Congress on Public Health, and attended a meeting of all of the DVM/MPH program directors.

CEPH staff also attended meetings of APHA, AAPHP, and APTR's Council of Graduate Programs.

Looking Ahead to 2021

2021 promises to be a busy and exciting year for CEPH. As we continue to monitor the COVID-19 pandemic and vaccination rollout, the Council looks forward to seeing our site visit teams back on the road by the end of 2021. CEPH will begin by implementing in-person follow-up visits for all virtual site visits. The Council will adopt the amended Accreditation Procedures in 2021. Additionally, the Council will receive comments on and adopt revisions to the 2016 Accreditation Criteria for Schools and Programs.

CEPH will continue to focus on providing technical assistance to schools and programs. Training activities will include multiple, virtual offerings of the Accreditation Orientation Workshop, the Pre-Application Orientation Webinar, and quarterly technical assistance webinars. As the Council releases the revised accreditation criteria, CEPH will provide technical assistance webinars to schools and programs. Additionally, CEPH will continue to implement the fully online site visitor training with new cohorts and trainees and live capstone sessions.



CEPH site visit team at the University of North Carolina, Greensboro in February 2020

CEPH Staff

Executive Director

Laura Rasar King, EdD, MPH, MCHES
lking@ceph.org

Deputy Director

Mollie Mulvanity, MPH, CAE
mmulvanity@ceph.org

Director, Accreditation Services

Kristen Varol, MPH, PMP, CHES
kvarol@ceph.org

Director, Special Projects

Nicole Williams, MPH, PMP
nwilliams@ceph.org

Associate Director, Monitoring & Evaluation

Alisha O'Connell, MPH
aoconnell@ceph.org

Senior Accreditation Specialist

Olivia Luzzi, MPH, CPH
oluzzi@ceph.org

Senior Accreditation Specialist

Alexandra DiOrio, MPH, CHES
adiorio@ceph.org

Accreditation Specialist

Emily Albers, MPH
ealbers@ceph.org

Accreditation Specialist

Zeinab Bazzi, MPH
zbazzi@ceph.org

Accreditation Specialist

Julia Konner, MPH, CHES
jkonner@ceph.org